



Mainsail – measurement form /page 1

1 – Measurer

Measured by

Place, date

2 – Customer and boat

Customer contact ph./e-mail

Boat type: builder model year

Boat name sail number

Measurement certificate (attach): IMS IRC ORC ORC Club PPJK other

3 – Rig details

Rig type: Sloop Ketch Catboat other.....

Mast material..... Section [mm]X..... Boom material.....

Masthead: 3/4 7/8 9/10 other

Nbr. spreaders Swept-back spreaders: YES NO

Runners: YES NO Other details

Mainsail furler: NO in-mast in-boom Make & type

(NOTE: in case a mainsail furler is fitted, please attach the furler maker's sailmakers instructions sheet)

4 – Principal dimensions

Maximum mainsail luff length (**Pmax**) =

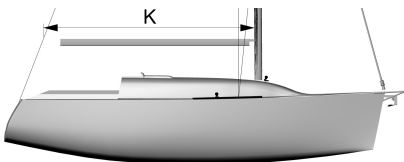
(hoist a tape measure on the main halyard and measure to the boom top face). NOTE: if the mast is equipped with a mainsail luff track, it is mandatory to hoist the head car rather than the free halyard!)

If a black band is present at mast head, indicate its distance below Pmax

Maximum mainsail foot length (**Emax**) =

(measure from the outhaul fully tensioned to the mast aft face – DON'T measure to the mainsail tack pin!)

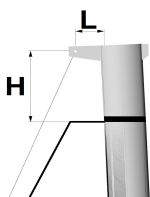
If a black band is present at the boom aft end, indicate its distance forward of Emax



Distance from backstay to mast at boom level **K**=.....

Backstay toppin to mast **L** =

Backstay top pin above Pmax **H** =



Mast pre-bend at rest = (can be estimated)

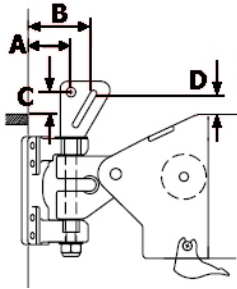
Special notes on rig:



Mainsail – measurement form /page 2

5 – Mainsail attachment points

5a – Tack point



tack setback **A** =

tack setup **C** =

tack fitting is: a shackle a pin

Ø of pin = cheek plates width

5b – Clew point

Clew fitting is: a car/skider on the boom a track on the boom none (clew strap required)

In case a slider or car on the boom is fitted: Ø of pin = cheek plates width =

5c – Reefing system

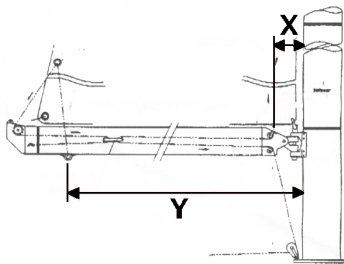
Reef tack fitting is: na hook a padeye other

Reef tack setback **B** = Reef tack setup **D** =

Reef lines exit boom on: Reef #1 PORT STBD Reef#2 PORT STBD

Distance reefing lines exit aft of mast: Reef #1..... Reef #2

Is a single-line reefing system fitted? YES NO



forward reef line exit: Reef1 **X**=..... Reef2 **X**=.....

distance of aft dead-end: Reef1 **Y**=..... Reef2 **Y**=.....

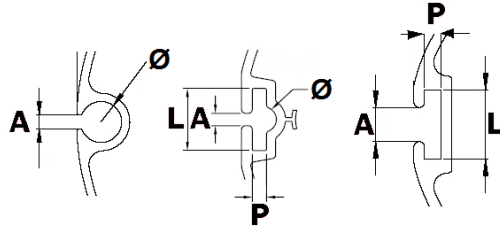
Notes:



Mainsail – measurement form /page 2

6 – Luff & foot grooves

Mast groove is: round round/flat combined flat

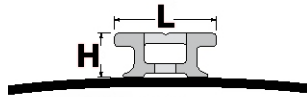


opening **A**=..... internal width **L**=..... depth **P**=..... diameter **Ø**=.....

If a boom groove is present: opening = internal diameter =.....

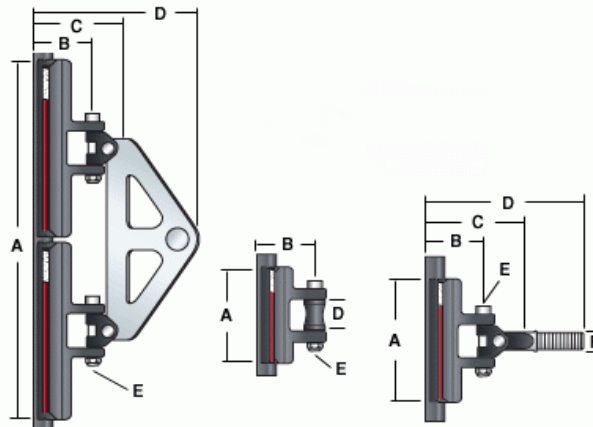
7 – Mast track

Make& type



track width **L**=

track height **H**=



	Producer	Part nbr.	height A	distance B	distance C	distance D	Ø E	Ø F
Headboard car							X	X
Batten car								
Intermediate car								X

Notes: